

# ***SANS Safety Investigations***

Performance, Process, Analysis, and  
Input to organizational discussions

**2023**

[WWW.SANS.COM.SA](http://WWW.SANS.COM.SA)

**BEYOND** 

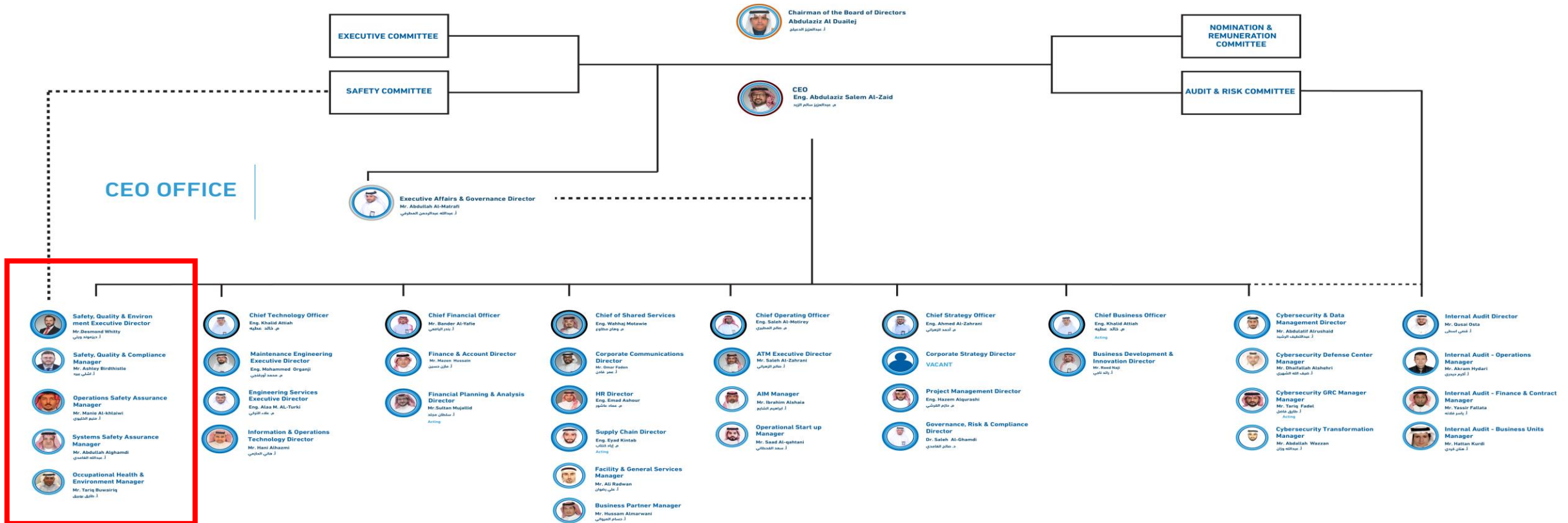


Saudi Air Navigation Services (SANS), is the ANSP responsible for providing Air Navigation Services in the Kingdom of Saudi Arabia.

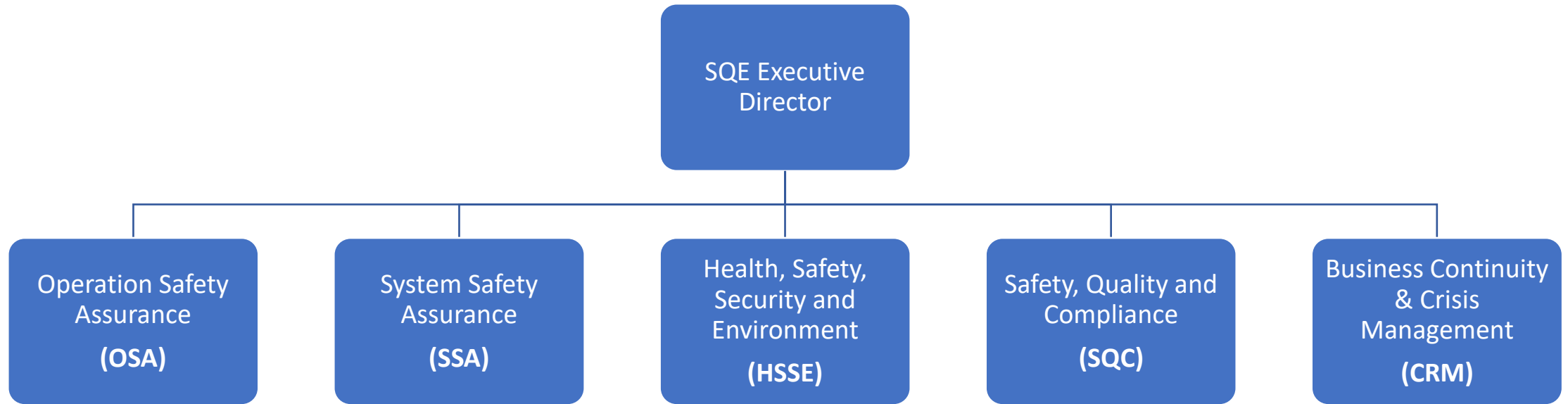
We are Managing Skies, Securing Lives & Shaping the future of Air Navigation Services in Saudi Arabia by playing important and vital roles in the safety, security and efficiency of airspace.



# SANS ORGANIZATION STRUCTURE



# SQE Organization Structure



# SQE

## Roles and Responsibilities

# Roles



**Safety Oversight**



**Change Management**



**Safety Audits & Inspections**



**Occurrence Investigation**



**SMS Safety Policy Development**



**Risk Management**



**Safety Reporting**



**Safety Assurance**



**Safety Promotions**



# Roles



**Quality Oversight**



**Data Analysis**



**Crisis Management**



**Business Continuity**



**Occupational Health  
Safety**



**Environment Safety**



**Security Management  
System**



**Safety Compliance**



**Safety Awareness**



# Operation Excellence

## Technology utilization by SQE

# Safety Dashboards

- ✓ Cutting-edge software solution designed to streamline safety monitoring and reporting for organizations.
- ✓ Consolidates relevant safety data into a centralized platform, presenting it in a visually appealing and easily understandable format.
- ✓ Provides Executive Summaries in addition to the comprehensive view of safety performance, enabling informed decision-making.



# Key Features and Functionality

**Data Visualization:** data visualization techniques like charts and heat maps to present safety metrics and trends in a visually appealing way.



**Customizable Metrics:** The dashboard provides the flexibility to configure and tailor safety metrics based on an organization's specific requirements.



**Real-time Monitoring:** With real-time data integration capabilities, the SANS Safety Dashboard ensures that safety information is always up to date.



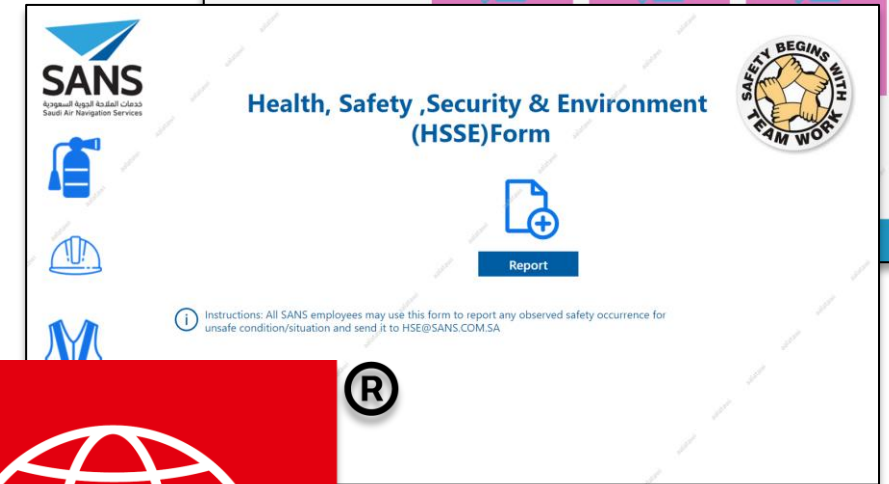
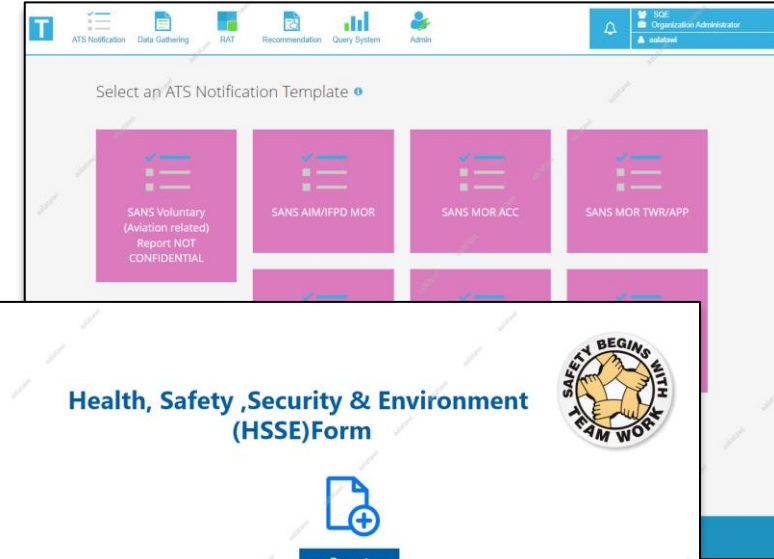
**Trend Analysis:** By analyzing historical safety data, the dashboard identifies trends and patterns that can reveal potential risks or opportunities for improvement.



**Increasing efficiency:** and promoting communication and collaboration among stakeholders.



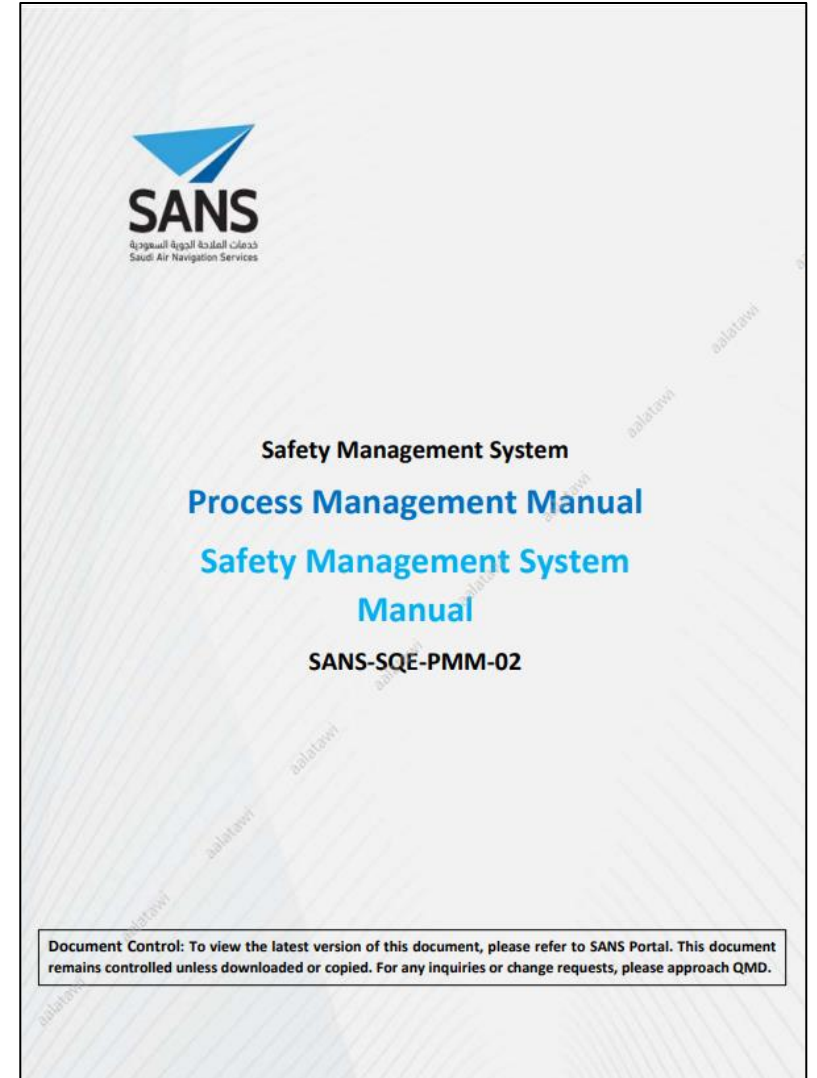
- ✓ **TOKAI System including Notification, Data Gathering, and Risk Analysis Tool Modules**
- ✓ **HSSE Voluntary Reporting System**
- ✓ **MMS (Maintenance Management System)**
- ✓ **ISO 45001:2018 Occupational Health and Safety Management Systems**
- ✓ **ISO 9001:2015 Quality Management Systems**



# SANS Safety Investigations

**SANS, in line with its unwavering dedication to aviation safety, has;**

- introduced the Safety Management System (SMS) as a comprehensive framework encompassing investigation processes and procedures.
- established robust safety performance targets and alerting levels, allowing for proactive identification and mitigation of potential risks.
- identified specific Safety Performance Indicators (SPIs) to provide focused analysis and prioritize incidents that require further attention

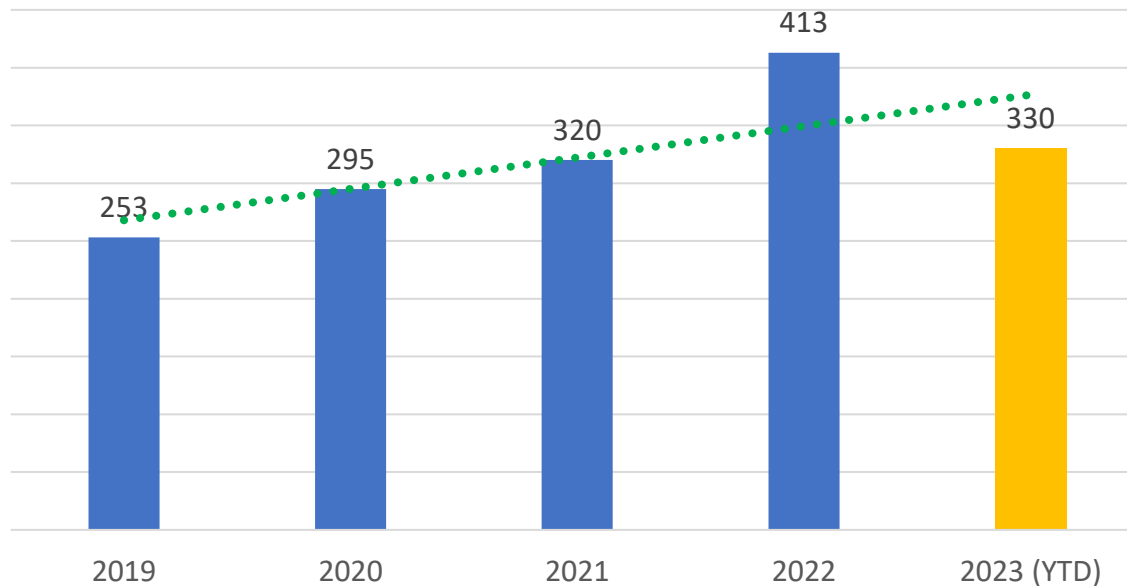


# Investigation Performance

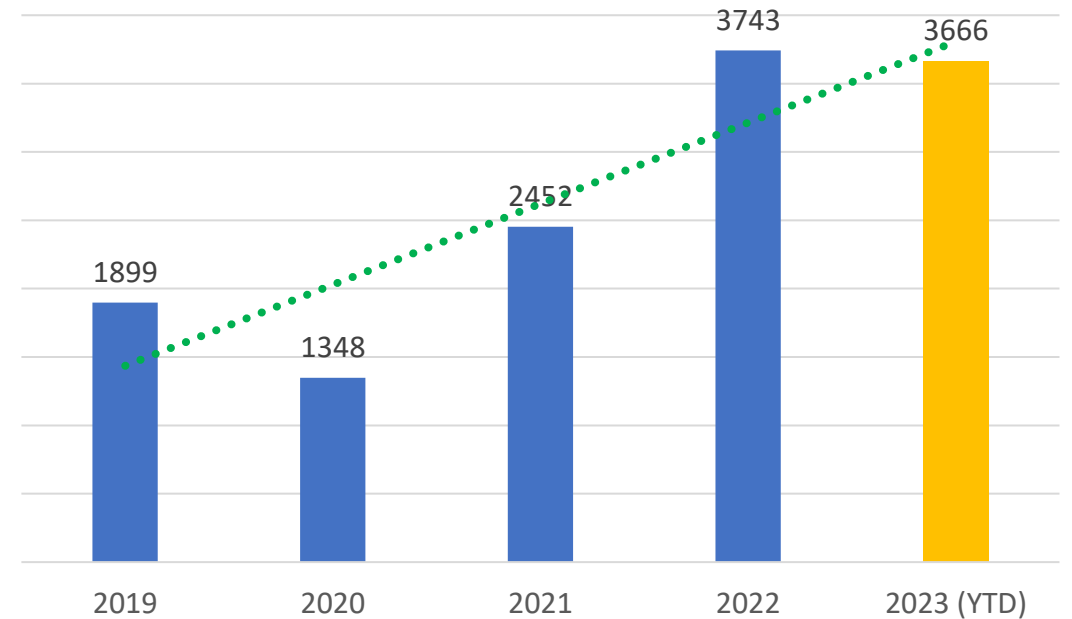
## Key Steps in SANS's Investigation Process:

- Incident Reporting
- Data Collection and Preservation
- Evidence Analysis
- Root Cause/Contributing Factors Identification
- Corrective Actions

INVESTIGATIONS

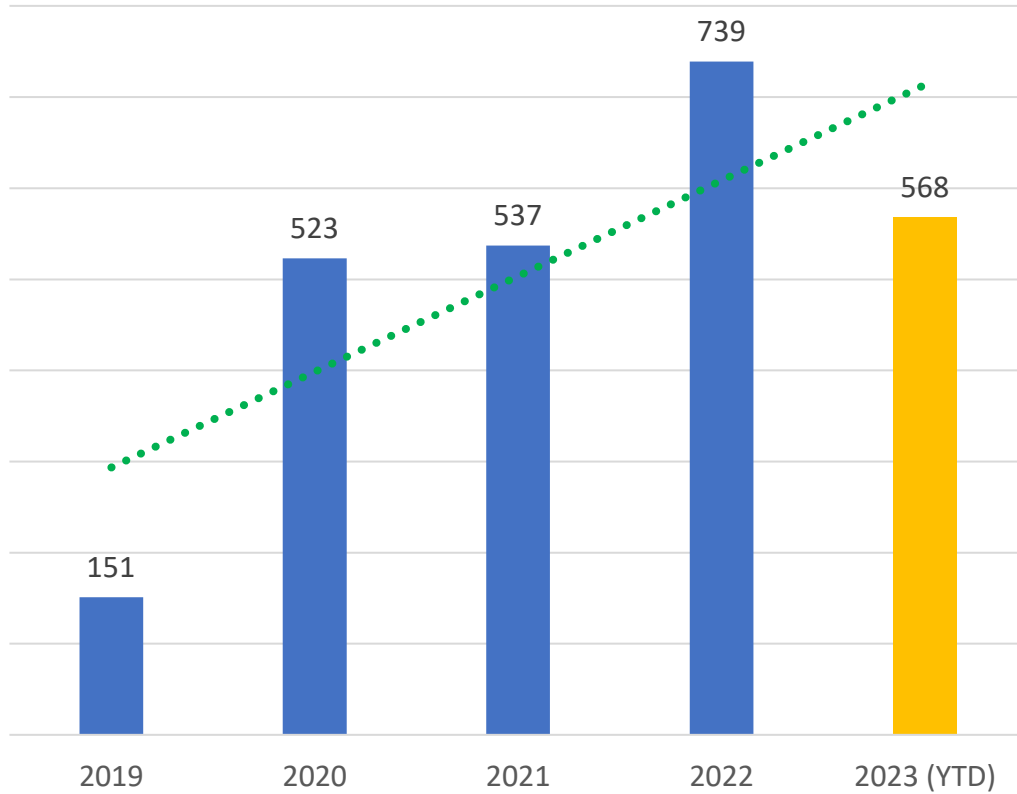


REPORTS



# Safety Recommendations Performance

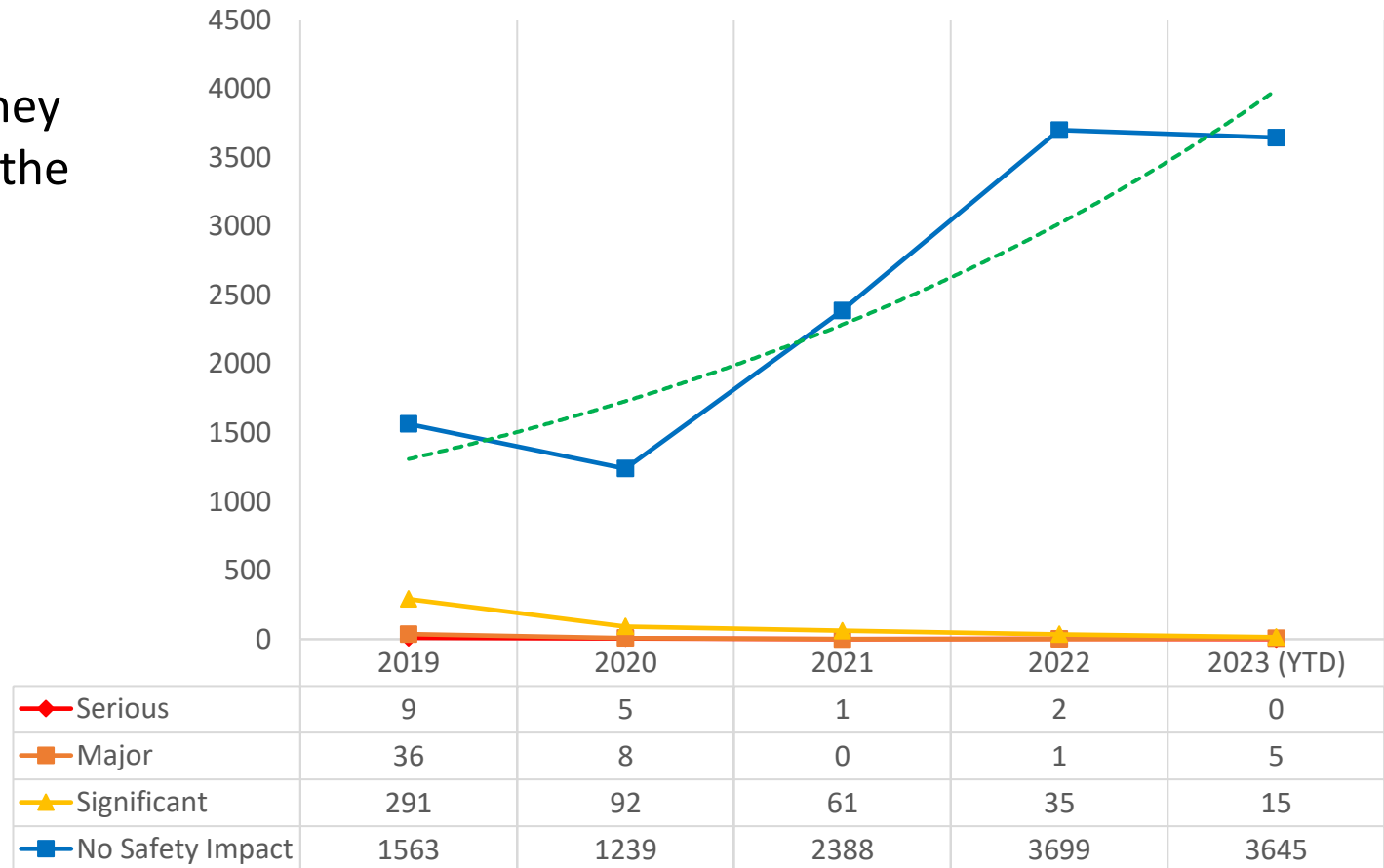
## SAFETY RECOMMENDATIONS



SANS has successfully achieved exceptional control over all safety occurrences, ensuring they remain within **acceptable** levels as defined by the established Safety Performance Targets (SPTs) and alerting levels.

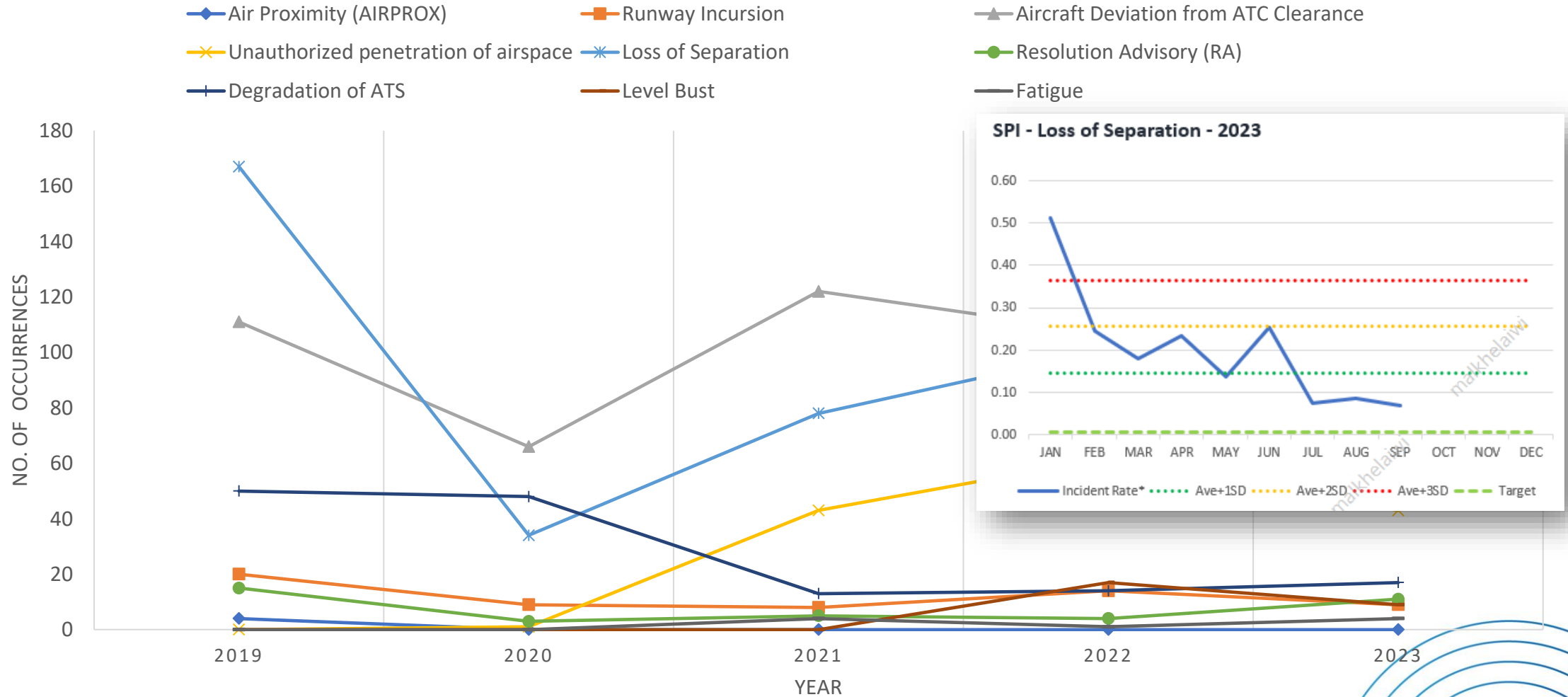


OCRS BY SEVERITY



# Driving Down Upwards Incidents

## SANS SPIS



As part of SANS's unwavering commitment to safety, the organization regularly convenes its monthly **Safety Steering Committee** meetings.

SANS has made several crucial decisions to enhance safety and operational efficiency, for example;

- to introduce ASMGCS;
- to Integrate Weather Radars with the SANS ATM System;
- Activation of Jeddah West Tower
- Upgrading Alahsa ATS from AFIS to ATC.
- Supporting ATSUs with extra layers of redundancy of power sources.





THANK YOU

